



Spring 2018
Volume No. 11
Issue No. 1

www.iloc.ca



**Sir Casimir Gzowski Memorial
Sunnyside, Ontario**

**Memorial to one of Canada's
greatest Engineers. Best
known for building the
Welland Canal and Yonge St.
(The world's longest street)**

Canadian Institutional Locksmith

**The Official Publication of Institutional
Locksmiths Organization of Canada**



Mission Statement of ILOC

ILOC (Institutional Locksmiths Organization of Canada) is a not for profit trade organization set up as one voice to provide support and education to its members in the Institutional and In-House aspects of the Locksmithing and Security Industry.

Our members include: Locksmiths, Carpenters, Maintenance Workers, and anyone else involved in the installation, sales and service of security door hardware in Hospitals, School Boards, Universities and Colleges, Commercial Companies, Property Management Companies, Government Institutions, Hotels, Municipalities, Hydro, Transit Systems, etc.

We are dedicated to increasing access to education, proper training and the sharing of information throughout the industry in order to provide a better and more professionally trained Locksmith for the Institutions and Companies requiring our services.

ILOC is committed to working in partnership with Distributors and Manufacturers to create a foundation of viable educational resources for our members while supporting their products and services for the betterment of all.

www.iloc.ca

51 Artreeva Drive Downsview, Ontario M3H 4T9

Phone / Fax: 416-398-4514 e-mail: office@iloc.ca

Strength Through Knowledge, Education, and Unity

Canadian Institutional Locksmith is published online and distributed to Institutional Locksmiths, Locksmith Associations, Healthcare Facilities, Colleges and Universities, School Boards, Government Agencies, Transit Commissions, Property Management Companies, and other security industry related companies and personnel throughout the world. The publisher reserves the right to cancel or deny any subscription at anytime without notice. All articles and/or technical information, including advertising are selected from submissions for reasons of timeliness, available space, and general interest to our readers. We regret that we are not able to select all submissions for publication. In some cases, edited versions of submitted material are presented and we are unable to vouch for their accuracy at the time of publication. Opinions expressed herein do not necessarily reflect the official view of ILOC or it's members. Appearance of advertisements does not constitute endorsement of products featured.

PUBLISHER

ILOC
(Institutional Locksmiths
Organization of Canada)
51 Artreeva Drive
Downsview, Ontario
M3H 4T9

EDITOR

Thomas Fraser
office@iloc.ca

<u>Topics</u>	<u>INDEX</u>	<u>Page</u>
The Last Word...Again		4
National Locksmith Registry		6
"Stock Lock"		8
Help ILOC Fight Cystic Fibrosis		13
Religious Keys...		15
What Exactly is an Institutional Locksmith?		20
Consumer Alert		22
How Do We Do That?		26
Golf Tournament Sign Up Sheet		29
ILOC Membership Application		35
Have Trade Shows Become a Thing of the Past?		36
Corporate Members		38

Make sure to follow us on these great sites!



Find us on
Facebook



Linked in



**Strength Through Knowledge,
Education and Unity**

The Last Word...Again.



Welcome to the start of the second successful decade for ILOC as we enter our 11th year!

During our 10th Anniversary year, we welcomed our newest corporate member, CNA (Connection Network Agencies) and this year we are excited to announce that past Vice President David O'Ball has agreed to join the ILOC Board of Directors as our new Secretary/Treasurer. David brings over 20 years of Institutional Locksmith experience to the board and will be a valued addition for our members.

In what has become a tradition, we are thrilled to announce the **3rd Annual Jeffrey Callaghan Memorial Golf Tournament** will be returning to Shawneeki Golf Club in Sharon, Ontario on Thursday May 17th, 2018 in support of Cystic Fibrosis Canada for new research to find a cure for such a deadly disease. We helped raise \$3550 in 2016 and \$4200 in 2017, so let's see how high we can raise the bar this year!

When you think of the value of membership in a recognized trade organization to an employer or customer, it really is a no brainer to join **ILOC**, especially for the cost of dues compared to **ANY** other lock organization in North America. We have continued to keep costs down in order to offer the lowest dues around. For less than the cost of a cup of coffee, one can join **ILOC** and have the strength of the **ONLY** National Locksmith Organization in Canada at your fingertips.

We continue to have a great partnership with our corporate members all across Canada. The future is indeed bright and exciting for everyone involved in **ILOC**. Be sure to "like" us on **facebook** or ask to join the **ILOC** group on **LinkedIn** for up to date information on benefits, classes and social events and keep checking our website at www.iloc.ca for more information.

Hope to see you out on the links!



Thomas Ian Fraser
Editor
Canadian Institutional Locksmith

ILOC BOARD of DIRECTORS

President

Jason Belanger
CPS, CRL

Vice-President

Thomas Fraser

Secretary/Treasurer

David O'Ball

Finance

David O'Ball

Membership

Joseph Camara

Public Relations

Thomas Fraser

Directors

Brian Bawn

Joseph Camara

John Fawcett

Chris Hinkson

Edward Sturge

Education

Brian Bawn

John Fawcett

By-Laws

Chris Hinkson

Ethics

Chris Hinkson



Try us.

Door
Hardware
Distributor

bgdistribution.ca

Ottawa . Montreal . Quebec . Toronto

Open to ALL Locksmiths across Canada



**AN INSTITUTIONAL LOCKSMITHS
ORGANIZATION OF CANADA INITIATIVE**

Welcome to the new National Locksmith Registry

This registry is open to ALL Locksmiths (not just Institutional) and security personnel whether they are currently members of an existing organization or not. The National Locksmith Registry has been created in order to provide a legitimate database of Locksmiths and Security personnel from across Canada who have completed and passed an RCMP criminal background check (form C216-C). This registry is for individuals only and not open to companies or corporations. The registry will not interfere with any province's existing Locksmith legislation and will only go to enhance our industry in the last remaining areas of Canada where there is no legitimate licensing and legislation. The National Locksmith Registry is a creation of and owned by ILOC and will provide the public, corporate, institutional and private sectors with the means to carry out safety and due diligence checks of their contractors and installers of security and door hardware as well as create peace of mind with residential customers regarding who is controlling the keys to their homes. This is a serious issue that has been neglected for far too long. The new National Locksmith Registry will go hand in hand with proper training to provide our industry with the best Locksmiths and security personnel possible for our clients.

To register, please complete the following steps.

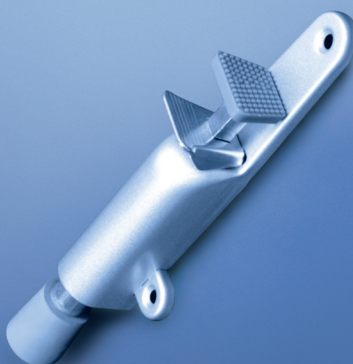
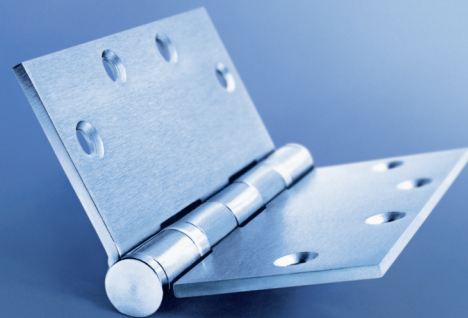
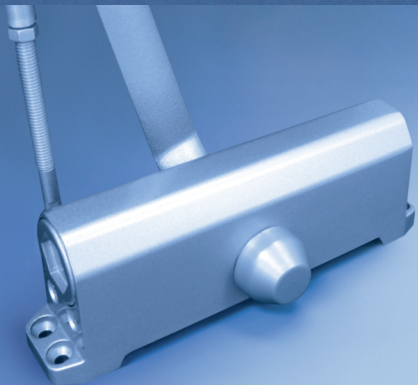
- 1) Visit the RCMP website at www.rcmp-grc.gc.ca/cr-cj/fing-empr2-eng.htm for a quick link on how to obtain a criminal background check.
- 2) Visit the ILOC website at www.iloc.ca and download the registry application form.
- 3) Mail the completed form along with a photocopy of the approved RCMP background check (no faxes accepted), a passport size colour photo and the \$10CDN processing fee to the ILOC office as stated on the registration form.

All picture ID cards will carry the name, company where the registrant is currently employed and the expiry date, which will be three years from the registration date.

CANAROPA

MONTREAL • TORONTO • CALGARY • VANCOUVER

A LEADING SUPPLIER OF
COMMERCIAL & RESIDENTIAL
DOOR HARDWARE
& SECURITY PRODUCTS



DOREX COMMERCIAL
HARDWARE



DraftGuard

GUARD

CCL

CX5

Viro



SOSS

jackson

PERKO

PEEK-O

MONTREAL

T 514 636 6466
F 514 636 6454

TORONTO

T 416 241 4445
F 416 241 1989

CALGARY

T 403 250 9333
F 403 250 1160

VANCOUVER

T 604 279 2524
F 604 279 0577

www.canaropa.com

This is known as a “Stock Lock”



This is known as a “Stock Lock’. The wooden stock onto which it is mounted has nicely carved and that is something that I (Billy B. Edwards Jr) have never encountered before”

The history behind this type of lock is ultimately political in nature. When this part of the world was colonies and not the USA various parts where ruled by England, France and Spain. In England and colony laws or rules that said manufacturing would not be allowed for metal goods and every metal product must be imported.

As we all, know, locks are heavy and in those days also bulky. Hence, the invention of the stock locks. A lock built on a sheet metal ‘case’ that was installed similarly

locks. They were lighter, involved less work and materials to produce and could be mounted to a piece of wood stock in the colonies.

Those locks for the churches likely go back to the early 1700’s as that seems top have been the heyday for this kind of lock. I have a couple and one is dated to 1735 as that was the year the building it came from was built. They were imported for a few years after the revolution until making became well established in CT and MA.

It is likely they where mounted with carriage bolts or some early version of sex bolts

BBE





The pictures were taken by Ed's Hardware. He told me this type of lock was used on church doors. It was mounted with leg-bolts, fastened by special security nuts, which could only be removed with a special tool.

These locks were used on church doors, there were 20 churches, each with its own key.

These locks were also used on municipal buildings that had to be secured. The locks were all KD, every half year, on rotation, the locks were removed and placed on a different door to prevent the key to be used unauthorized.

Measurements of this wood for this lock is; 8" wide X 5 1/6" high X 1 1/4" thick. The ornaments are 1/4" thick metal.

Arnold





Day of Mourning - On April 28

MORE THAN THIRTY YEARS AGO, the Canadian Labour Congress declared April 28 a National Day of Mourning for workers injured or killed on the job. Every year since, unions, labour councils, families and community partners gather by the thousands to 'mourn for the dead'. What began through the efforts of Canada's labour movement is now observed in more than 100 countries.

On April 28 honour those who have lost their lives or paid with their health. You can:

- encourage others to attend a Day of Mourning event
- draft a message for your organization's publication or web site
- work with local media to promote the Day's significance, write about worker monuments and cover Day of Mourning events
- lobby politicians to recognize the Day through proclamation
- invite faith communities and social justice groups to observe the Day
- convince employers and public institutions to lower flags to half-mast.

The Day of Mourning though, is also intended to focus attention on what we can do to break the silence of indifference and say **enough** to the suffering caused by hazardous working conditions. On April 28 let's resolve to action that restores and promotes dignity and health in our workplaces and our communities. On this day and each that follows you can:

- educate others about basic health and safety rights and prevention measures
- help social justice and other groups educate at-risk members of our communities
- negotiate greater decision-making power for worker representatives and joint committees
- make health and safety a collective bargaining priority
- encourage local media to report on health, safety and environmental issues
- encourage MPs and/or MPPs to support ergonomic and violence regulations and stronger enforcement of existing legislation
- create monuments to promote public awareness of workplace health and safety.

THE WORKERS CENTRE mourns with you on April 28. Everyday thereafter we support you and all our community partners in pursuit of safe and healthy work environments - we're in it for life.

Change begins with you. For more information about April 28 or how the Workers Centre can help you pursue prevention contact a Workers Centre near you.

FALLS AVENUE RESORT PREFERRED PARTNER PROGRAM



WATERPARK PACKAGE

- One night accommodation at participating hotels
- Four two-day Fallsview Indoor Waterpark passes
- \$40 Gift Card to Rainbow Room by Massimo Capra
 - \$20 Gift Card to Fallsview Restaurant
 - \$10 Gift Card to Hard Rock Cafe
 - \$10 Gift Card to Planet Hollywood
 - \$10 Gift Card to Rainforest Cafe
 - \$5 Gift Certificate to Crock A Doodle
- Four passes to Laser Ride Adventure Heros
 - Four passes to Wild Safari Mini Golf
 - Four passes to Traffic Slam Bumper Cars

PACKAGES SUBJECT TO CHANGE WITHOUT NOTICE

COUPLES PACKAGE

- One night accommodation at Sheraton on the Falls or Crowne Plaza Niagara Falls - Fallsview
- \$40 Gift Card to Rainbow Room by Massimo Capra
 - \$40 Gift Card to Windows by Jamie Kennedy
 - \$40 spa credit to Christienne Spa
 - \$20 Gift Card to Fallsview Restaurant
 - Two Cocktails at Hard Rock Cafe
- Two Wine Tasting Passes to Trius Winery at Hillebrand and Peller Estates Winery
 - Hershey's Chocolate World Gift

PACKAGES SUBJECT TO CHANGE WITHOUT NOTICE

ROOM ONLY

- As a preferred partner you are entitled to receive exclusive room rates valid at:
- Sheraton on the Falls • Crowne Plaza Fallsview
 - Skyline Inn • Clifton Victoria Inn

Falls Avenue Resort is a 20 acre site with 4 hotels, 12 restaurants, Fallsview Indoor Waterpark and numerous other attractions and shops located just steps from the majestic Niagara Falls.

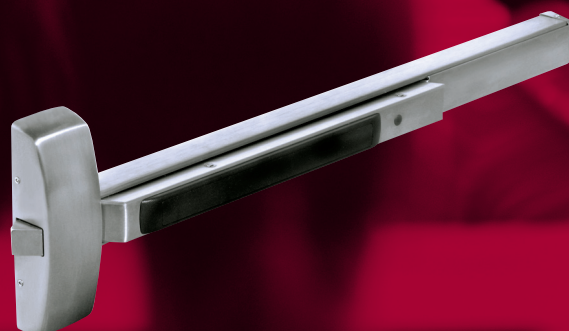


TO MAKE RESERVATIONS AND FOR FULL TERMS AND CONDITIONS VISIT
WWW.FALLSAVENUERESORT.COM/PPP

USE YOUR COMPANY CODE: Call ILOC office for your code



Your security matters to us.
From over 100 vendors to your door,
we serve you nationwide.



1934-2014: Celebrating our 80th anniversary of Total Security Solutions



WWW.IDN-INC.CA

VANCOUVER

Phone: 604.253.0017
Toll Free: 1.800.567.1177
Fax: 604.253.5344

CALGARY

Phone: 403.291.4844
Toll Free: 1.800.813.5344
Fax: 403.291.4893

EDMONTON

Phone: 780.944.0014
Toll Free: 1.888.922.3707
Fax: 780.944.0929

TORONTO

Phone: 416.248.5625
Toll Free: 1.800.268.1306
Fax: 416.248.9945

BURLINGTON

Phone: 905.319.7400
Toll Free: 1.866.288.6037
Fax: 905.319.8780

OTTAWA

Phone: 613.749.2172
Toll Free: 1.866.485.4436
Fax: 613.749.6651

MONTREAL

Phone: 514.956.0248
Toll Free: 1.800.310.3436
Fax: 514.956.9769

HALIFAX

Phone: 902.468.1373
Toll Free: 1.888.550.4209
Fax: 902.468.2117

Help ILOC Fight Cystic Fibrosis

You can help ILOC in the fight to end Cystic Fibrosis. Our team page for the **3rd Annual Jeffrey Callaghan Memorial Golf Tournament** has been set up on the CF Canada website and will stay active through June of 2018.

Any donation is welcome and the tax receipts will come directly from CF Canada for every donation of \$20 or more. Just type in the link below on your browser and it will take you directly to the donation page.

Then, just follow the instructions to complete your donation.

<https://secure.e2m.com/registrator/TeamFundraisingPage.aspx?teamID=79889/&langpref=en-CA#panel1-1>

Thank you for all your support in helping stop this horrible disease.

MOTORIZED LATCH PULLBACK KITS



ARLP-UL-M-KIT
Adams Rite 8000



VLP-UL-M-KIT
VD 33/35 & 98/99

POWER SUPPLIES



POWER ACCESSORIES



VD2
871-2 Relay Card



PM300
Power Booster for Solenoid LP



VC2412
Voltage Converter 24VDC to 12VDC



COMMAND ACCESS
TECHNOLOGIES

Reliable, get it quick, cost effective, electrified locking hardware built in the USA!

Supported by Connection Network Agencies in Canada!

CL1 SERIES



ELECTRIFIED HINGES



LPM1 SERIES



CDL SERIES



ML1 SERIES



3 YEAR WARRANTY



MOTOR DRIVEN

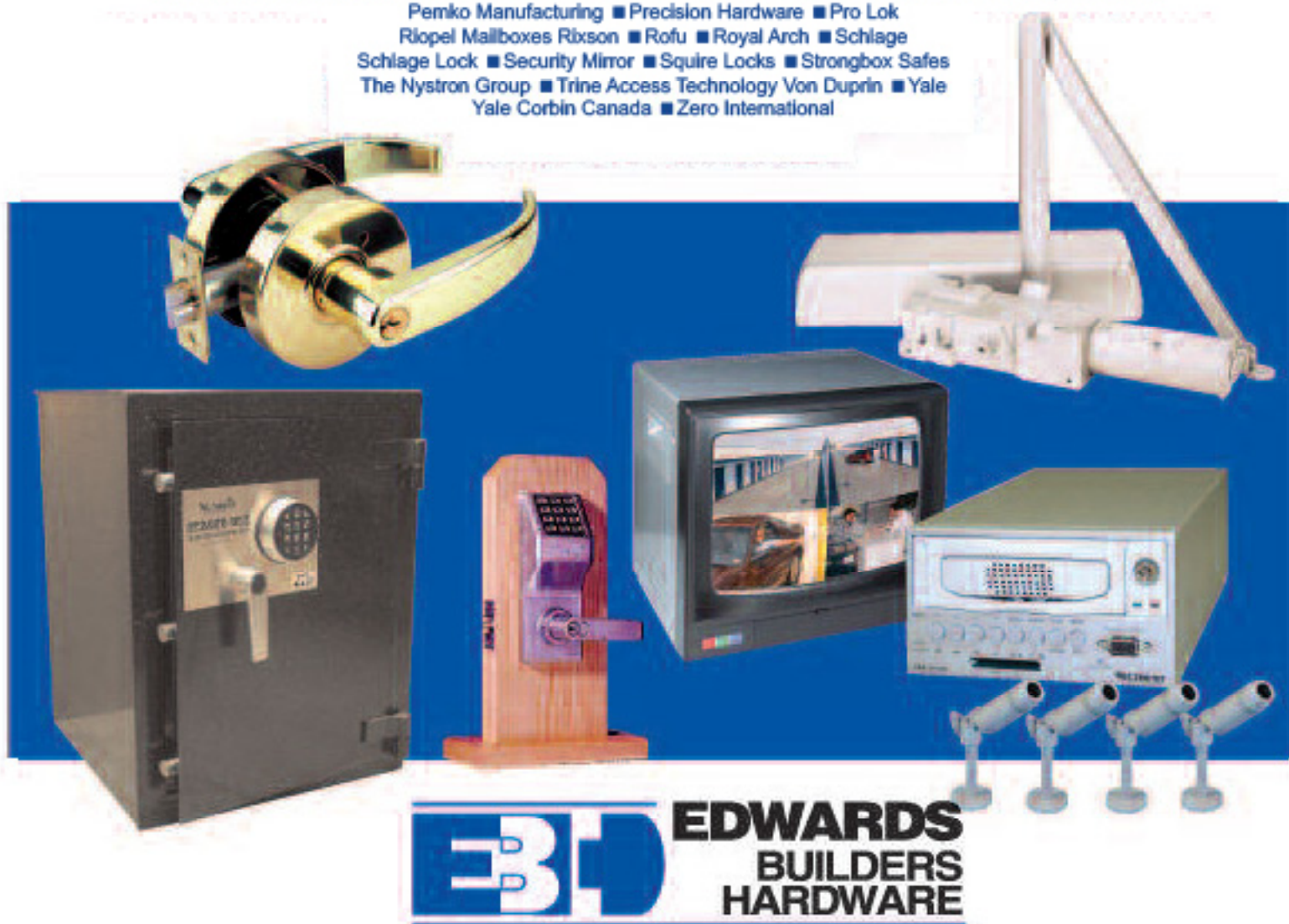


EDWARDS... your ONE STOP Total Security Solutions Supplier

**Complete Commercial & residential Door Hardware
& Security Products for the professionals**

- ◆ Prompt deliveries ◆ Knowledgeable and friendly personnel
- ◆ Access to over 60+ manufacturers

A.K. Draft Seal Ltd. ■ Acorn Manufacturing Decorative Hardware ■ Adams Rite Manufacturing Co. ■ Alarm Lock Systems
Besam ■ Best Access Systems ■ Bobrick Washroom Equipment Inc. ■ Bommer Industries ■ Camden Manufacturing
Canadian Builders Hardware ■ Canadian Mailbox Company ■ Cendrex Inc. ■ Colombo Design ■ Crest Electronic Inc.
Corbin Russwin ■ Detex Corp. ■ Don-Jo ■ Dor-O-Matic Automatic Door Systems ■ Edge Hardware Inc. ■ Falcon Lock
Folger Adam ■ Frost Products Ltd. ■ Gallery Specialty Hardware Ltd. ■ Glynn Johnson ■ GMS Products ■ Greenside Group
Hager Companies ■ Hunter Automatics ■ IMPRO ■ Intersel Brass ■ IR Security & Safety ■ Kaba-Ilco ■ Klassen Bronze
KN Crowder Manufacturing ■ Knappe & Vogt Manufacturing Company ■ Kryptonite Lock ■ LAB Products ■ LCN ■ Locknetics
Master Padlocks ■ Monarch Exit Devices ■ National Guard Products ■ Norton ■ Orion Hardware ■ Olympus Lock
Pemko Manufacturing ■ Precision Hardware ■ Pro Lok
Riopel Mailboxes Rixson ■ Rofu ■ Royal Arch ■ Schlage
Schlage Lock ■ Security Mirror ■ Squire Locks ■ Strongbox Safes
The Nystrom Group ■ Trine Access Technology Von Duprin ■ Yale
Yale Corbin Canada ■ Zero International



**EDWARDS
BUILDERS
HARDWARE**

Edwards Builders Hardware (Toronto) Ltd.
4988 Dundas St W. Islington ON M9A 1B8

Phone: 416.231.3325 Fax: 416.231.1941 Telephone Canada Wide: 1.800.268.2521
email: edwardbuilders@bellnet.ca website: edwardsbuildershardware.com

Religious Keys, an Ancient and Modern Comparison of Symbols and Power

By Brian Denyer

With the Ankh, also known as the Key-of-Life, there is both a mystery and secrecy in its origin and meaning. However we can extrapolate possible answers from its usage and current application. In comparison the historical record for the Vatican's use of keys can be more easily found and as a consequence more conclusions drawn about it.

Termed the Ansata cross it is also known as the Egyptian Cross. The Ankh was Sacred to the ancient Egyptians, and possibly one of the most historically recognized symbols other than the modern day Catholic cross. Translated from the Latin *crux ansata* as the 'handle shaped cross' this image survives as an icon possessing mystical power throughout the Coptic Christian era. As a religious cross it has been used in the symbolism of the Coptic Christian Church. This was due to the historical importance of the Ankh, as icon of the dynastic Egyptians, and this in turn lead to it being adopted by the early Coptic Christian Church in Egypt. This church movement went on to eventually become the Coptic Church.



Historical Origins

Being of Egyptian origin the visual record can be traced back to the Early Dynastic Period. Supposedly the elliptical portion of the Ankh represents life, as an endless cycle. The ellipse is supported by the Tau cross below it. This T portion represents the material plane. When carved into the burial sarcophagus it then symbolizes the belief of the gift of everlasting life for the deceased person's spirit. It also serves as a key to the bridge between the mortal and immortal plane of energy. The ankh seems to be an evolved form an ancient Egyptian glyph for eternal life energy. By extension it serves as an antenna to conduct the divine energy of life that permeates the universe. Just as the radio antennae serves to pick up and then focus transmitted electronic energy waves traveling through the air, so does the Ankh.

It is one of the most recognized symbols represented in Egyptian art. The Ankh appears frequently in artistic images that represent the deities of the after life and the Pharaohs. Examples of this may be seen in the decorative stone cut motifs on temple walls, tomb inscriptions and official architecture. Perhaps the most well known artifact associated with the symbol is King Tutankhamen golden sarcophagus. As a symbol of rank, the Egyptian Pharaohs are often pictured either in possession of an Ankh or else being given an Ankh.

Use by Spiritual Leaders

Now we move from the generic to the specifically focused symbol blessed by certain spiritual guardians. The ancient Egyptian civilization had godlike spiritual guardians to pray to for protection. The Ankh shown as being possessed by each God had specific powers associated with that god and goddess. The Ankh of the God Anubis is imbued with the protection of the dead. Therefore we also find the dead being referred to as *ankhu*, and a term for a sarcophagus was *neb-ankh*, meaning possessor of life. Sekmet's Ankh represents the energy of War and was carried by warriors. Hapi's Ankh is related to the cleansing rituals of purification in the waters of the river Nile. This key symbol was also carved on canal

walls on the Nile to aid in protection for control of the flow of water. Today it is still listed as the key of the Nile River. The purpose was to avoid the extremes of both floods and drought. Guardian Amen's Ankh was believed to assist with the awakening breath of life. This is only a partial listing of the several deities.



Use as an amulet

Stylized artwork shows Egyptian gods with Ankhs used as an amulet. An amulet serves as a source of magical protective energy for the wearer. The Latin word *amuletum*, translates into 'means of defense', and it is currently known as amulet. This is a powerful talisman that provides the wearer with protection from the evil forces. By birthright Egyptian royalty were given a golden Ankh amulet. Construction materials and its modern re-birth Because the Ankh is a sun-symbol, the Egyptians crafted examples of it from gold. This yellow luminous metal was most often used to represent the golden sun god Ra. Due to this reasoning the Ankh was almost never made in silver. In contrast current popular fabrication is cast from sterling silver. A series of events lead to the current day revival and adoption of the symbolic Ankh. Discovery in the 1920's of the Egyptian Pharaohs tombs lead to a surge in the interest of the Egyptian Empire's cultural past. A replica Ankh was re-entered popular culture during the hippie movement of the late 1960s, when it became a popular symbol for peace and truth. Afterwards the New Age Movement came in to being with the goal of seeking harmony and balance within the realms of the Universe, World and the individual. Theoretically, the movement is based on a matrix of Western traditions from the pre-Christian era, along with Eastern metaphysical traditions. The next usage of a metal Ankh was in the classic movie *The Hunger* first released in 1982.

Worn as a pendant around the neck the Ankh was composed of brass and camouflaged a covert lethal surprise. Since then it has been taken as a symbol by various cultural movements and had a revival with such groups as modern day Vampires. There is debate as to the interpretation placed on the difference in meaning between the Hollywood tradition and the actual Vampire community. The Vampiric subculture took the Ankh as its sigil which represented their intrinsic belief system of energy exchange. Thus serving as a symbol for a variety of conceptual energy theories relating to life and immortality. The first major production of the symbol was in 1997. Termed the Sanguinaum Ankh it was designed by D'Drennan for the New York City vampire community and spread from there, although it was cast in silver contrary to the ancient Egyptians. Looking at eBay, the Ankh is now made from a variety of materials. Various Vampire groups designed specific Ankhs to show their membership in differently organized group structures termed Houses. Generally a series of rituals have to be passed before an applicant can be accepted into the House and be permitted to wear their specific Ankh. As in ancient Egypt, a modern day caste system is followed in the form of Priest, Warrior and Counselor. Adherents can be found in a majority of countries in the world and are drawn from most professions.

The Ankh and the Christian Cross

As we have seen the Ankh was adopted by the ancient Egyptian Empire who used it to symbolize the dual concept of life, along with spiritual life after death. This is similar to the Christian genesis of the cross as a symbol of their religion. The ankh, being a type of cross had long been taken as a central religious Egyptian symbol. The Ankh, in contrast to other religious logos of the time, is a plain logo. Egyptian gods and guardians were portrayed as animal faced-human figures. This Ansata cross implied a unification of the various gods and belief in one all powerful God under one symbol. Monotheism is also at the core of Christian belief.

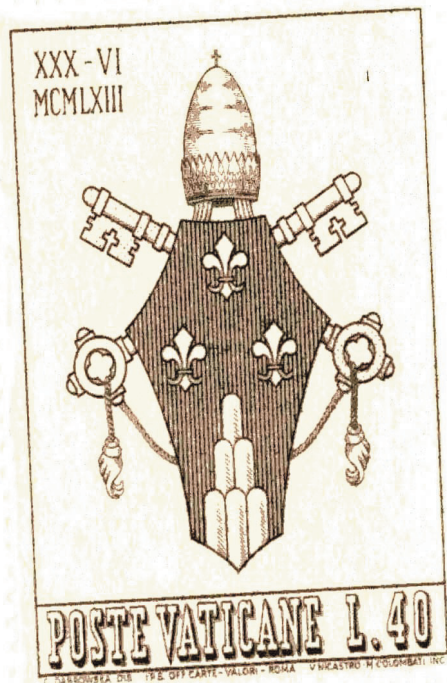
Use of Warded keys as Religious symbols

The article now looks at Warded Keys as used in Christianity from the historic biblical texts, theological, and ritual viewpoints. Keys have a long tradition and are now used as part of a graphic design to represent the symbol of Papal jurisdiction.

Historical Analysis of Official Insignia of the Holy See

The initial usage of crossed keys was started by the pontificate and dates from early Christian times in

approximately the 14th century and continues to the present day. Heraldic bearings have been in common use by Knights and the nobility since the Middle Ages. The College of Heralds in London England regulates their granting and usage. About the same time, an ecclesiastical heraldry for clergy also developed. Religious heraldic usage follows the same rules as civic heraldry with regard to the composition and definition of the shield. Generally a coat-of-arms consists of a shield bearing several important symbols and surrounded by elements that indicate the person's or groups history, rank, and title.



Tradition

The Pope as Supreme Pontiff and the Vatican State have traditionally employed 2 crossed Bridge Ward keys in a specifically designed manner. They are placed either above or on the Pope's red shield. Scotland's St Andrew's cross is the basic design used for the proper placement for the angles of the crossed keys. Two keys are used and represent different precious metals. One gold key is positioned on the right, and alludes to the power in the kingdom of the heavens. The remaining key is of silver and positioned on the left, indicating the spiritual authority of the papacy on earth

Dual Function of the keys

Two keys are needed for the opening and closing of sacred places. The keys are symbols of the Popes authority and granted power to close (bind) and open (unbind). The inherited importance is drawn

from the Gospel and is represented by the keys given to the Apostle Peter by Christ.

In the Gospel according to **St Matthew chapter 16 verses 18, 19** Matthew recounts that Christ said to Peter: "I will entrust to you the keys of the kingdom of heaven. "And I tell you that you are Peter, and on his rock I shall build my church and the gates of Hades will not overcome it. I will give you the keys of the Kingdom of Heaven, and whatever you declare bound on earth shall be bound in heaven; whatever you declare loosed on earth shall be loosed in heaven", a world without boundaries of space and time. This is the historic origin for the Popes to adopt and display, as Peter's successors, the Bridge Warded key as an emblem of papal rank.

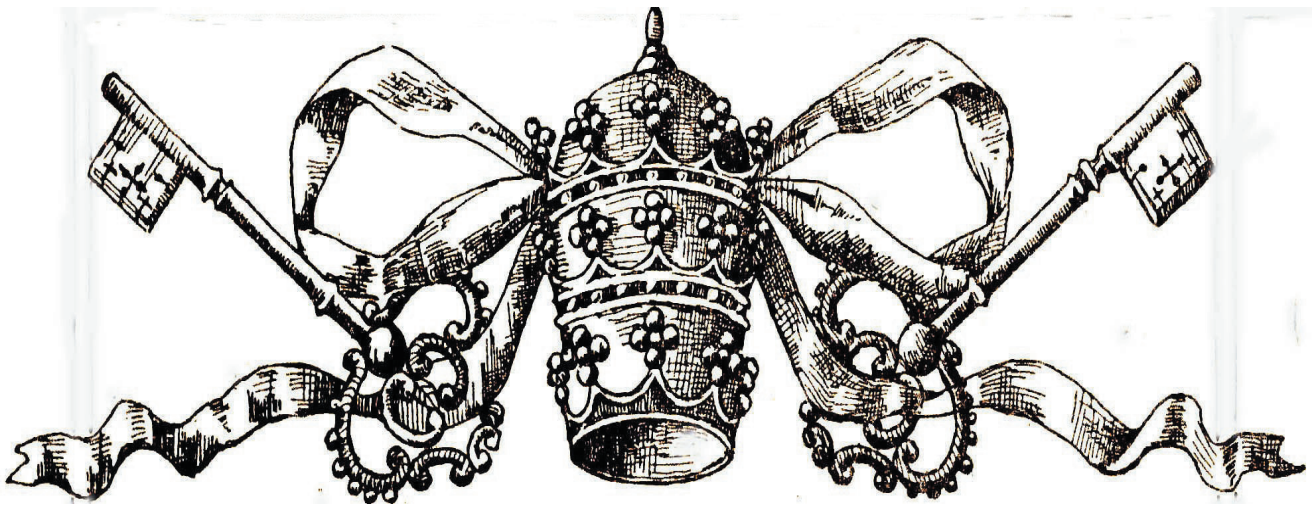
Monograms used on key heads

Official Christian keys are decorated with religious symbols. The key head is a good place for a monogram. Some keys have an intertwined IHS for the words Iesus Hominum Salvator. In ancient Roman serif style lettering the letter I served as a dual symbol for J also. The monogrammed letter M stood for Mary. There are some exquisite examples of Master keys handcrafted with these types of initials, but copyright laws prevent me from sharing them in this article.



Direction of the Bows and Beards

Keys are usually placed with the beards pointed upwards and towards heaven the source of earthly power. Stylistically the key heads vary according to artistic taste, and range from the Gothic to the fancy Baroque style. Key Heads are pointed downwards towards earth. Therefore the turning portion is



placed into the hands of the Vicar of Christ. Two cords hang from the grips of the keys, usually of a red or blue color. This cord which unites the key heads signifies the connective bond between the two powers.

Key biting

Cruciform, or cross warding cuts are used for the key bit. Thousands of ward cuts could be used but it seems that the repetition of the cross shape adds impact to the design. Two variations have been shown over the years either taking the form of open wards or closed wards.

History of the keys in Biblical texts

Historical development of the keys significance is recorded in both the Old and New Testaments. Both these holy text's envelope the key with importance and power they deserve. Some examples are quoted and given below.

St Matthew verse 19

As quoted above the keys are the typical symbol of the power that Christ gave to St. Peter and his Successors. The right of church jurisdiction and administration are held by the Holy See (Pope). As such, the Papal coat-of-arms appear on buildings and in various publications, decrees and documents.

Book of Isaiah Old Testament

Chapter 22 verses 21-22

"...I will place on his shoulder [Elyaqim son of Hiqiyahu] the key to the House of David; what he opens no one can shut, and what he shuts no one can open." This describes the original Egyptian pin tumbler wood key of an approximate length of two feet. It was used as the theoretical model for the new

miniaturized YALE feather key produced commercially in the 1860's. Initial generations of the YALE key line can be found in the TAOL lock collection.

The Gospel according to St Matthew New Testament Chapter 16 verses 18-19

Jesus gives the keys to the Kingdom of Heaven to Simon-Peter the son of Jonas. The Papal Coat of Arms originates from this verse. An oil painting in the Sistine Chapel located in the Vatican has a painting by Perugino (1446-1524) depicting Jesus delivering the huge keys to Peter.

The Revelations of St John

Chapter 1 verse 18

"...And I [Jesus] hold the keys to of death and Hades."

Further on in chapter 20 verse 1-3

"And I saw an angel coming down out of heaven having the key to the Abyss and holding in his hand a great chain. He seized the Great Dragon, the ancient serpent, which is the Devil, or Satan, and bound him for a thousand years."

That is an amazing feat and shows the power granted to the one entrusted with the key to the gate of hell.



What is World Autism Awareness Day?

In 2007, the United Nations General Assembly declared April 2 as World Autism Awareness Day (WAAD) with the goal of bringing the world's attention to autism, a pervasive disorder that affects tens of millions globally.

WAAD shines a bright light on autism as a growing global health concern. WAAD activities help to increase and develop world knowledge of autism and impart information regarding the importance of early diagnosis and early intervention.

Support continues throughout the month of April in much of the world as it is also considered Autism Awareness Month.

What Exactly is an Institutional Locksmith?

The true definition of a Locksmith is a person who makes and repairs locks. So much mystery still remains about our chosen profession due to the secrets passed down from one generation to the next within families, when the art was not as open to outsiders as it is today.

As recent as thirty to forty years ago, it was still frowned upon to pass the knowledge of Locksmithing to non-family members. It was only by necessity to find new employees in a shrinking trade pool, that opportunities finally emerged. Even today, with all the talk of educating and teaching new apprentices, there is still an air of it being a “good ‘ol boys” club at times. Some Associations will gladly accept your membership dues while promising huge benefits, but actually offer little or nothing for the Institutional or In-House Locksmith and Security Professional to benefit from. While their intentions may be good, they don’t have a proper understanding of the differences between an “outside” or mainstream Locksmith and the Institutional side of the trade.

Many Institutions do not necessarily employ specific Locksmiths (as modern Associations classify them) for their door and security hardware needs. Some use Locksmiths, while others use multi-trained Maintenance workers, Carpenters, Superintendents, Electricians, or even Caretaking staff. These groups include, but are not limited to; Government, Transit companies, Healthcare facilities, Colleges & Universities, School Boards, Hotels, and Property Management companies.

We as professionals should take enormous pride in our trade. One may hear from time to time, comments made by the average joe or handyman that anyone can put a lock on a door. Fortunately, we know different. Yes, most people could install a simple house lock on a door as long as the proper hole was cut in the door, but a real professional knows how to install and repair all types of lock and door hardware. Does the handyman know why a key doesn’t work properly by feel or just looking at it? Can they rekey a lock or do they have to sell the

client a new lock with new keys? These are just a couple of examples of our knowledge, and the difference between our art and other trades.

With the Institutional aspect of Locksmithing and Security, we have the luxury of knowing the physical surroundings and demands that are called upon them on a daily basis. In most cases, the architectural hardware has already been speculated and must remain intact to keep consistency within the properties themselves. On the other hand, we also find ourselves at a distinct disadvantage at times due to aging hardware that in some instances hasn’t been altered or replaced in fifty or sixty years and was probably discontinued twenty years previous.

Being an Institutional or In-House Locksmith means having to make choices as they present themselves on your own merit and sometimes having to repair those antique locks over and over for years, even going as far as to make parts yourself out of necessity. This is what the trade used to be and unfortunately in these disposable times, one doesn’t always have that option in the “real world”.

In most cases, it is very difficult to become an Institutional or In-House Locksmith because one must have a proven track record and the job market is limited at times due to the low job vacancy rate. With this in mind, we should always remember the definition of a true Locksmith, “one who makes and repairs locks”, this relates to a great many tradesmen and maintenance workers out in the Institutional world who don’t have the recognition or the access to proper training and education as the more professionally trained Locksmith has received. As such, it is a privilege and also our responsibility to pass on our knowledge and expertise whenever possible to new Locksmiths and apprentices, so that we may continue to have a flourishing trade to be proud of.

That is what an Institutional Locksmith is!

FALCON®



Locks



Exit devices



Door closers



Door operators

We deliver solid solutions.

We know that businesses are built on solutions that exceed expectations. Our selection of Falcon® products deliver solid performance at a solid price. Falcon consistently delivers durability, convenience and unmatched value. For over 40 years, they've built a reputation of providing quality products at a reasonable price. It's also the way we do business and it's why we think Falcon is a solid choice for any project.

Allegion offers an array of products and solutions for a multitude of applications. Visit our website to find out more at allegion.ca

ALLEGION™ 

© 2017 Allegion

CONSUMER ALERT!!!

It has come to our attention as well as the Better Business Bureau that the so-called scammer locksmiths have risen again across our country. **ANY** company with the words “Locksmith Master” or “Pro’s” in the name **ARE NOT AND NEVER WILL BE MEMBERS OF ILOC!**

They are using false affiliations and illegal use of various trade logos such as our own. Beware of these “alleged” crooked companies which appear to be based out of Atlanta, Georgia and have no **legitimate** licensing or employees in this country.

The following list of names has been confirmed to be **illegally** using the ILOC logo and claiming to be members...**which they are not!**

Aurora Locksmith

Concord Locksmith Master

Downsview Locksmith

King City Locksmith

Maple Locksmith

Milton Locksmith Master

Newmarket Locksmith Master

New Westminster Locksmith Master

North Vancouver Locksmith Master

North York Locksmith

Oshawa Locksmith Master

Port Coquitlam Locksmith Pro’s

Port Moody Locksmith Master

Port Moody Locksmith Pro’s

Richmond Locksmith Master

Shield Locksmith

Surrey Locksmith Master

Thornhill Locksmith

Toronto Locksmith Master

Vancouver Locksmiths Master

Vancouver Locksmith Pro’s

Vaughan Locksmith

Winnipeg Locksmith Master

Woodbridge Locksmith

24 Hour Tsawwassen Locksmith Master

24 Hour Vancouver Locksmith Master



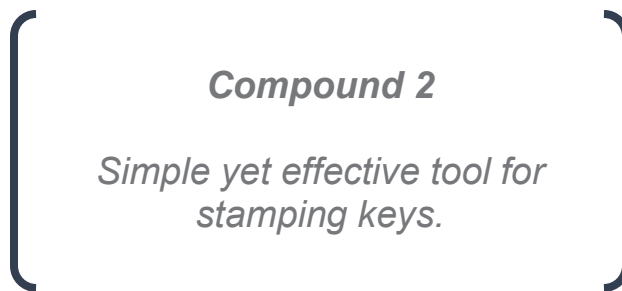
FOR IMMEDIATE RELEASE

PRESS RELEASE

Rocky Mount, NC, (March 8, 2018) - Ilco is pleased to announce the **Compound 2 Manual Key Stamper** addition to our existing line of marking & engraving equipment.

This manual key stamper is a simple yet effective tool operates by striking with the hand or a mallet. The compound 2 accommodates large head keys and standard cylinder keys as well as key tags in a variety of finishes.

The rotating dial features alpha-numeric characters measuring .08" x .12" (2 mm x 3 mm). Built in detents assure proper registration for accurate spacing between letters and numbers.



To learn more about the *Compound 2 Manual Key Stamper*, visit www.ilco.us.

Details on this model are found on the **Engraving and Marking Equipment** menu, **Compound 2**

Contact your Ilco distributor for pricing on the Compound 2 Manual Key Stamper.

Ilco Web Site: www.ilco.us

Ilco Customer Service: 800-334-1381 (option 1)





Open possibilities.

Media Contact:

Bruno Solari

Havas Formula

646-762-8713

solari@havasformula.com

Schlage Unveils its Next Major Innovation— Schlage Custom™ Door Hardware

*Customizable Style and Functionality Options at an Affordable Price Point; First Look
Available at International Builders' Show (Jan. 9-11)*

Carmel, Ind. (Jan 9, 2018) – Schlage®, a brand of Allegion that has been creating stylish, innovative door hardware for more than 95 years, today introduced Schlage Custom™ Door Hardware. This major innovation features premium style alongside combined interior locks that offer both bed/bath and hall/closet functionality in one. This universal functionality allows homeowners to change from a doorknob to a lever, a traditional look to a modern look—even a non-locking door to lockable—in just minutes, without having to remove the inner core of the lock. Premium handlesets in ¾ trim and 2-piece styles will be available in the Spring, so homeowners can coordinate their hardware style inside and out.

Schlage Custom Door Hardware will make its debut at the International Builders' Show (IBS) on Jan. 9 at Schlage booth #W3183. Ted Roberts, Allegion's Style and Design Chief, and [Amy Matthews](#), contractor, DIY aficionado and HGTV®, DIY and TheDesignNetwork.com host, will be onsite at the booth to meet with attendees and discuss vignettes they've created showcasing the style possibilities of the new collection.

"We developed Schlage Custom Door Hardware to inspire homeowners and trade professionals alike to see door hardware the way we do – as an essential part of the home's style. This new line is highly customizable and offers premium designer features like low profile trim, concealed screws and lustrous, long-lasting finishes at a much more affordable price point than competitors," said Roberts. "It's even easier to shop the line, with the Combined Interior offering which includes one lock that works for both bed/bath and hall/closet doors. In addition to all that, homeowners can easily update the style and finish of the hardware later without installing a whole new lock."

Other key differentiators of the Schlage Custom Door Hardware collection include:

- The line is backed by outstanding customer service, sales and merchandising support.
- Quick-shipping is available for its dealers when ordered through wholesalers.

"When Schlage first approached me about working together to introduce the line at IBS, I knew this evolution in door hardware was something I wanted to be a part of," said Amy Matthews. "Schlage Custom hardware makes it easy to create a consistent look throughout the home that also adapts to the changing life of any room with just one flexible system. [There's truly nothing else on the market like this at such an affordable price point.](#)"

For additional information about Schlage Custom Door Hardware, including where to purchase, visit www.Schlage.com/Custom.

Schlage Custom™ Door Hardware isn't the only innovation Schlage has been developing - stop by Schlage's booth at IBS to talk with brand representatives and learn more about the following:

- **Multi-Family**

Easy Electronic Access Control – one system with one credential available in *five* lever styles and *five* finishes across *seven* brands for the entire property. Part of that offering is CTE—a single door controller that allows perimeter openings to be managed in the same system as Schlage Control™, NDE and LE wireless locks to deliver a single software solution for an entire multi-family site. The CTE works with locking hardware such as electrified exit devices, electric strikes, mag locks, or automatic operators and will be sold in a kit with either the Schlage MT11-485 or MT15-485 reader. As with any ENGAGE™ enabled device, the CTE can be managed with ENGAGE™ web and mobile apps or be integrated into one of our Software Alliance Member systems.

- **Tech Integrations**

Latest additions to Schlage's smart home portfolio of products include Android™ smartphone compatibility for the Schlage Sense™ Smart Deadbolt, the accompanying Schlage Sense Wi-Fi Adapter that offers remote access, and integrations with Amazon Alexa®, available now, and Google Assistant in early Q1.

For more information on Schlage, visit the Schlage booth #W3183 at IBS or visit www.Schlage.com.

HGTV is a trademark of Scripps Networks, LLC; Android is a trademark of Google LLC; Alexa is a trademark of Amazon Technologies, Inc.

About Allegion

Allegion (NYSE: ALLE) is a global pioneer in the field of safety and security. We keep people and their property safe, wherever they are, bringing together simple solutions and advanced technology. Allegion is a \$2.2 billion company, with products sold in almost 130 countries. For more, visit www.Allegion.com.

#



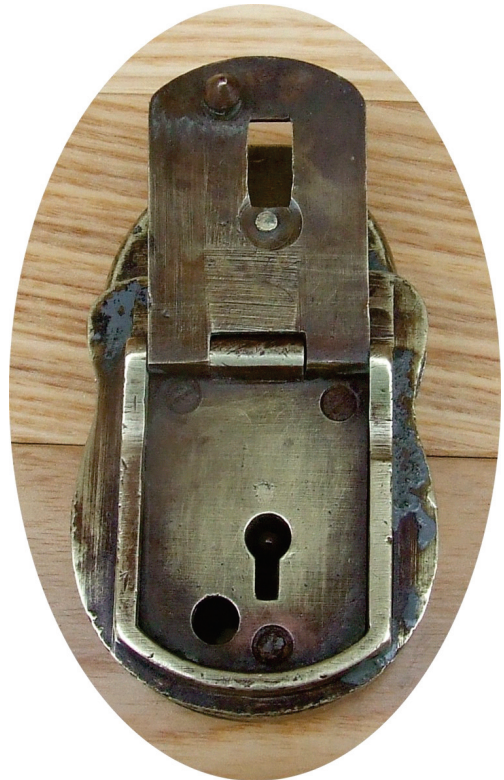
How Do We Do That?

Key needed for unknown padlock



Open the small keyhole cover, the keyhole becomes visible, look for a blank that you can use by the size of the keyhole.

We were lucky the padlock was open.



Lift up the large lid, it will show now 3 screws which you need to remove, lift up complete key hole cover gently.



Remove the 3 screws and pull of the cover, you will find a spring-loaded wafer. Remove the wafer and put out of the way for now.

The remainder of the lock can't be taken apart, thus you need prepare your blank with suds by smoking.. Insert the blank in the lock, you still need blank material on the out side of this padlock, this part is needed to move the wafer we did put out of the way before.



The wafer is that locking part for the large keyhole cover, you can see on the left hand side in the above picture, when that large cover hole is closed and the padlock is in a locked position this large keyhole cover is also in a locked position.

When using the smoking method I like to do it with candle light, hold the blank for the lock you working on above the flame to the suds form the flame come on your blank. Insert the blank in the lock you are working on and put pressure on the blank. Remove the market blank and file or cut with an hacksaw or use the key cutting machine which has an extra cutter special for steel blanks.



Personal I like a hacksaw, I put two saw blades on which I put a small Vice-Grip to ho;e those two blades together, so now I can see where I need to cut the blank where the first mark is. Re smoke the blank and re insert the blank for my next mark, and file or hacksaw some more.



Arnold

Your #1 Source for Hardware Solutions.

Value, Quality and Selection.

HALSCO's diverse selection of premium hardware solutions are ideal for multiple applications from door hardware, storefront hardware to security hardware. We offer:

- Deadbolts
- Door Closers
- Door Knobs & Levers
- Hasps
- Exit Devices
- Hinges
- Cylinders
- Deadlatches
- Paddles
- Strikes
- Mortise Cylinders
- Deadlocks
- Check Chains
- Mailbox Locks
- And so much more!



HALSCO SAFES®



HALSCO Safes: Guaranteed to Give You Peace of Mind

High quality Halsco safes offer an array of B-rated, UL fire rated protection and UL residential security container classifications in accordance with Underwriters Laboratories (uL). Various types of safes are available in many sizes with the option of mechanical or electronic dials.

- Economy Fire Safes
- Burglary and Fire Safes
- Depository Safes
- Under Counter Slot Safes
- In-Floor Safes
- Wall Safes

**For more information on HALSCO products,
please contact your local distributor.**

Hardware Agencies

T: 905-676-1975 | 1-800-268-6741 | F: 905-676-1924
E: sales@hardwareagencies.com | www.hardwareagencies.com

Serrubec

T: 514-631-6791 | 1-800-361-0243 | F: 514-631-0494
E: info@serrubec.com | www.serrubec.com



3rd Annual Jeffrey Callaghan Memorial Golf Tournament



Please fill out this form and return it with full payment to the ILOC office no later than Monday April 30th in order to participate.

When: Thursday May 17th, 2018
Tee off time: 8:10am (breakfast starts @ 7:30am)
Where: Shawneeki G. & C.C. 18543 Woodbine Ave. Sharon, Ontario (Woodbine & Green Ln.)

Funds will be raised via this event for Cystic Fibrosis Canada in memory of Jeffrey Callaghan who passed away on October 28th, 2015 at the young age of 25 years after a long, hard battle with the disease.

Golfer (includes breakfast, golf, cart, lunch and prize) \$135

Corporate Sponsorship \$375

Golf and corporate sponsor (includes 1 golfer) \$485

Golfer #1:

Golfer #2:

Method of Payment (circle one) Mastercard Visa Cheque (make payable to ILOC)

Card Number

Expiry Date

Name as it appears on card

Cardholder's signature

**Return by mail to: ILOC (Institutional Locksmiths Organization of Canada)
51 Artreeva Drive
Downsview, ON M3H 4T9**

Return by fax: 416-398-4514



What you need... When you need it.

- Our team has 100+ years of industry experience.
- Top-of-the-line products from leading brands such as Shanahan's, HALSCO & ABUS.
- Distributors of Assa Abloy, Allegion, Kaba Ilco, Entrematic & Camden products.
- Excellent customer service for all your needs.
- Experts in industrial, institutional, commercial and residential markets.

Security Hardware Solution Specialists.
Proven Source. Proven Solutions.



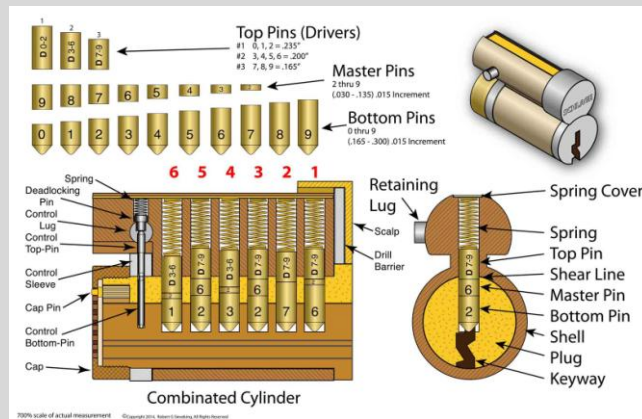
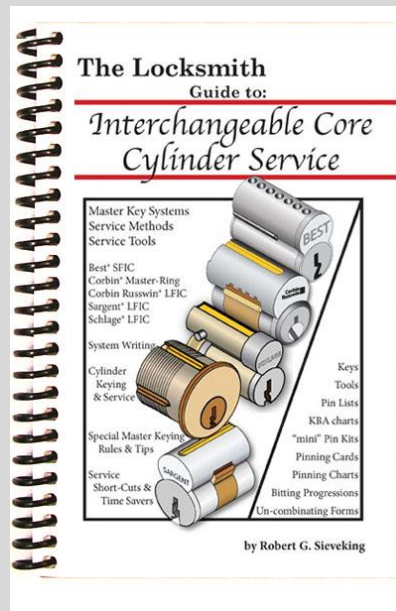
**For more information about available products,
please contact Hardware Agencies.**

Tel: 905-676-1975 | Toll Free: 1-800-268-6741 | Fax: 905-676-1924
Email: sales@hardwareagencies.com | www.hardwareagencies.com

Proudly affiliated with...

Shanahan's





The Locksmith Guide to: Interchangeable Core Cylinder Service

This book is a complete “How-To” guide to servicing SFIC and LFIC Interchangeable Core Cylinders. It covers Best™ style SFIC cylinders and LFIC cylinders by Corbin-Russwin, Sargent and Schlage. A complete section on the Corbin Master-Ring cylinder begins the training. The Corbin Master-Ring cylinder is the father of all two shear-line cylinders. The text explains the cylinder construction, pinning sequences, and Master Key System Development.

More than a simple instruction, it explains the “reasons” behind all of the keying rules and guidelines. If you are writing

master key systems or simply maintaining these cylinders, you will find information here that will help you understand the limits of the cylinders and the simplest methods for maintaining them.

Chapters begin with “Learning Objectives and ends with “Study Questions,” which lead the reader to a more complete mastery of the material covered.

The “Scan & Print” section at the end of the book provides blank copies of all the combining and keying forms found in the text.

This allows the locksmith to easily apply the material covered, on any job or system.

The “Pinning Matrix” form can be used on any system, to completely eliminate the need to “figure out” individual “Pin Stacks,” when combining any I/C core.

This is an easy to understand “practical guide,” written for the “working locksmith.” (284 pages, 241 Illustrations, 5 1/2 x 8 1/2 spiral bound)

At present, we have not released this book to locksmith distribution.

The book may be ordered from: Sieveking Products Company, by calling 815-874-4030. (Tell Jane you are an ILOC member.)

Immediate shipment is guaranteed. (USPS Priority Mail)

Pages of the text may be viewed at: <<http://www.sievekingprodco.com/>>

Email the author at: <Bob@sievekingprodco.com>



CLICK ON THE IMAGE ABOVE TO VIEW VIDEO
[must be connected to the internet]

PowerJump™ ICPT

Inductive Coupling Power Transfer

Securiton uses its expertise in electro-magnetic solutions to deliver power in a whole new way.

The PowerJump uses inductive coupling to send energy wirelessly across the door gap to power electrified locks and latches. Retrofitting electrified locks into existing openings just became easier — no core drilling the door.

The PowerJump protects your power pathway by making it invisible, eliminating wires across the gap that are vulnerable to vandalism or breakage.

PowerJump™ ICPT

Inductive Coupling Power Transfer



Specifications:

UL 10C fire-rated: 3 hour

CAN4-S101(ULC-S104)
fire door conformant

ANSI A250.13-2003
windstorm listed

FCC Part 15 and Industry
Canada Compliant

Endurance:

2,000,000 cycles

Operating Temperature:

-40 to +120F (-40 to 49C)

Electrical:

Input Power (Frame Side):
Max 500mA @ 24VDC

Output Power (Door Side):
500mA @ 12VDC
250mA @ 24VDC

Dimensions:

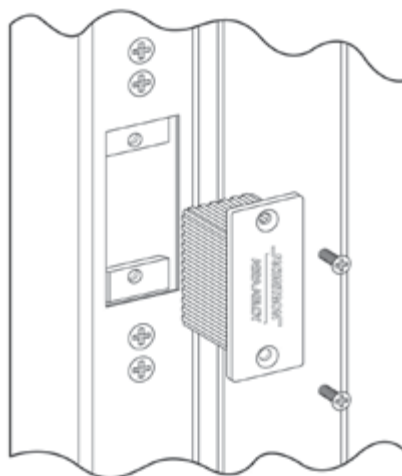
Send Unit (Frame Side):
H 2.75" x W 1.25" x D 1.32"

Receive Unit (Door Side):
H 2.75" x W 1.25" x D 1.75"

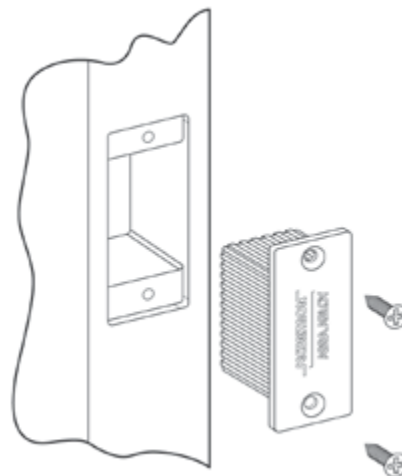
PRODUCT FEATURES

- Transfers power wirelessly across door gaps of up to 3/16"
- Use with electrified locks, latches or other door hardware requiring up to 6 watts (500mA @ 12VDC) of power*
- Flexible mounting: can be installed on hinge side, latch side or top of frame
- Dual voltage output 12VDC or 24VDC field selectable
- Continuous or intermittent duty
- For fail secure devices
- Patents: #8,294,302
- Patents Pending

**PowerJump does not transfer latchbolt monitoring, REX or data signals*



Metal Frame



Wood Door



ANSI A250.13-2003
WINDSTORM
RESISTANT



DUAL VOLTAGE



FIRE RATED



LISTED

SECURITRON™

ASSA ABLOY

» No moving parts

» No more broken wires

» No need to core drill the door

AVAILABLE THROUGH

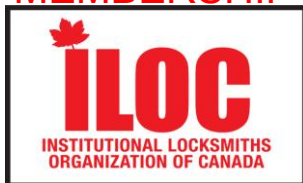
EDWARDS
BUILDERS HARDWARE

Joe Camara
Burke Gerhardt
Paul Carvalho
Michael Goldberg
Kevin Silva

Membership Classes **and Definitions**

- a) **ACTIVE** - an individual who is gainfully employed in the Institutional and In-House aspect of the locksmith and security industry for a minimum of (2) years. An Active member is eligible to hold office and has the right to vote.
- b) **APPRENTICE** - an individual who meets all the requirements of an Active member except for the minimum (2) years of service. An Apprentice member is not eligible to hold office, but has the right to vote.
- c) **STUDENT** - an individual who is actively participating in locksmith training courses, but is not currently employed as a locksmith. A Student member is not eligible to hold office and does not have the right to vote.
- d) **ASSOCIATE** - an individual who is gainfully employed by a distributor, manufacturer, or any other company engaged in the sales and/or service of locksmith and security products. An Associate member is eligible to hold office and has the right to vote.
- e) **CORPORATE** - a company engaged in producing lock and security hardware and accessories to the locksmithing and security industry. A Corporate member cannot hold office and is not eligible to vote. Also includes a company link on the ILOC website.
- f) **CORPORATE SILVER** - same as Corporate designation, with the additional right to place a half page colour advertisement in the ILOC magazine as well as a company link on the ILOC website.
- g) **CORPORATE GOLD** - same as Corporate designation, with the additional right to place a full-page advertisement in the ILOC magazine as well as a company link on the ILOC website.
- h) **GROUP** - Institution or Company which employs staff (designation covers up to 7) to carry out repairs or other work on locks and/or locking and door hardware. Examples are Universities, Hospitals, School Boards or large Locksmith and Security Companies working in the Institutional side of the industry. The employees would each be required to join ILOC themselves in order to be members in good standing. Groups (and staff included in such) are not eligible to vote or hold office.

MEMBERSHIP APPLICATION



Welcome to ILOC (Institutional Locksmiths Organization of Canada), a national trade organization designed specifically for persons involved in the Institutional and In-House aspects of the Locksmithing and Security Industry.

To apply for membership, please complete this application and submit it with the dues payable for the current year along with any business card, company letterhead or other suitable proof of employment.

All of the following questions must be answered before this application can be processed. Please type or print.

Applicant Information

Surname _____ First Name _____ Initial _____

Company Name _____

Address _____ City _____ Province _____

Postal Code _____ Workplace Phone # _____ Workplace Fax # _____

E-Mail Address _____ Website _____

Professional Information

Are you currently employed in the Institutional and In-House aspect of Locksmithing and Security Industry related trades? YES NO

How long have you been involved in Locksmithing? _____

ILOC Sponsor's name and membership # (not required) _____

Name and phone numbers of two industry related references _____

Have you ever been convicted of a crime? YES NO

Classification of Membership (Rates are per annum. Please circle one)

Active \$70 Apprentice \$70 Student \$60 Associate \$70
Corporate \$175 Corporate Silver \$300 Group \$400 Corporate Gold \$500

Method of Payment (circle one)

Mastercard Visa Cash
Cheque (Make payable to ILOC or Institutional Locksmiths Organization of Canada)

Card Number _____ Expiration Date _____

Name as it appears on card _____

Cardholder's Signature _____

I understand and consent that in the course of reviewing this application, ILOC may review publicly available information for the sole purpose of verifying the information submitted and do a background check.

I certify that all statements are true and, if accepted as a member, I agree to abide by the rules, regulations, and by-laws of ILOC, and further agree to adopt the Code of Ethics of ILOC as my own, and to adhere to it to the best of my ability.

Applicant's Signature _____ Date _____

Return by mail to: ILOC (Institutional Locksmiths Organization of Canada)
51 Artreeva Drive
Downsview, Ontario
Canada M3H 4T9

Return by fax: (416) 398-4514

Have Trade Shows Become a Thing of the Past?

In this day and age of rising business costs, is it really necessary for manufacturers, distributors, and trade organizations to pay out the large sums required to exhibit at industry conventions and trade shows?

Most companies, no matter how large, are looking at new ways to cut expenses. With the ever shrinking attendance at conventions and trade shows across North America, the most logical question seems to be, "Is this a justifiable expense"?

As Institutional and In-house Locksmiths, we have regular contact with our distributors and manufacturer representatives on a monthly or even weekly basis. This being the case, there is no need for companies to waste the large expense of having a booth at a "selling" trade show where we are concerned.

This is not to say that we as an industry shouldn't get together at a convention type "meet & greet" with educational seminars and classes. It is just not logical to have our corporate members waste their money on expensive exhibit "tables" in order to try and "preach to the converted", when they could participate in direct contact with Locksmiths and security professionals by interacting in more casual settings where business can be conducted and knowledge shared.

The attendance levels alone show that "selling" trade shows have run their course and people just don't feel the need to attend and walk around a large ballroom or convention centre, when they can just as easily call and place an order by phone or fax and conduct business via the internet.

With the ever expanding World Wide Web providing almost twenty-four hour business and educational opportunities, it has become harder and harder to draw excited participants to these types of trade shows.

This trend is not exclusive to the Locksmithing industry, but is becoming more and more noticeable in all industries. Two of the largest Tech shows have shut down in the last two years. Almost every industry trade show in North America has seen a dramatic decline in actual attendance over the last five years. Even the larger manufacturers in our industry have had to rethink how they present product with adjustments to booth size and trade delegates.

The one saving grace to these shows is the opportunity to showcase new product and expand our knowledge through educational seminars and factory certification classes.

Even with the access provided by the internet, nothing beats a good hands-on demonstration for teaching purposes. The opportunity to see and troubleshoot new products, or learn how to service and repair existing products is of much greater importance to the Institutional and In-house Locksmith than the sixty second interaction at a trade show booth. In return, the manufacturer and distributor representatives receive important feedback and questions regarding his/her product from the actual purchasers and installers themselves. We as an industry must look forward and encapsulate all the positives from the internet, trade shows, conventions, retreats, seminars, classes, etc. to find the right balance to promote and grow our industry so that we all can benefit in the end. That means working together to provide educational seminars and classes for those willing to take the time to learn.

For years now we have heard the rumblings throughout our industry that the more "experienced" Locksmiths out there don't want to participate in classes because they don't want to embarrass themselves by not using the correct terminology as it is used today, or just asking a question to clarify things. Well, we have found just the opposite to be true, especially on the Institutional side of Locksmithing. Even the most experienced Institutional and In-house Locksmith wants to expand his/her knowledge whenever possible in order to stay current and sharpen their skills while providing smarter and more efficient ways of protecting the properties they are employed to secure.

Our own industry is poised to embrace all the positives of technology advancements to deliver value to Institutional and In-house Locksmiths. By doing this, we will benefit from greater access to educational opportunities in order to improve on our most important asset...ourselves.



ILOC Member Benefit

The Right Team for the Right Results

Established in 1955, Paisley-Manor Insurance (PMI) is one of Canada's leading independently owned insurance brokerages. For over fifty years, we have built our organization on the complete satisfaction of our clients and the highly respected insurance companies we represent. PMI earned its reputation thanks to the quality of its products, competitive pricing, and efficient claims service. At PMI, we don't take the word commitment lightly. We are dedicated to being involved in every aspect of your insurance program. It is our pledge to develop a plan to cover your complete insurance requirements at the best possible premium available.

PMI develops specialized industry insurance programs including:

- Locksmiths
- Specialized Trade Contractors
- Alarm Installation & Monitoring
- Private Investigators
- Home and Auto Insurance

Coverage highlights could include: Bonding, Failure to Perform, DAS Legal Expense & More. For your personalized quote & to discuss your current business or personal coverages & options, please contact your ILOC dedicated Broker directly.

Contact: Kelly Dorey
Office: (416) 380-2227
Mobile: (416) 660-4169
Email: kellyd@paisleymanor.com



"RESPONSIBILITY. INTEGRITY. COMMITMENT"

It's the way we see life, it's the way we do business.

Head Office: 1446 Don Mills Road, Suite 110, Toronto, Ontario, M3B 3N3

ILOC Corporate Members 2018

Please support our members who recognize the value and importance of ILOC and support us in creating a better Institutional and In-House Locksmith and Security Industry.

Allegion Canada Inc.

Corporate Office
1076 Lakeshore Rd. E.
Mississauga, ON
905-403-1800
www.allegioncanada.ca

Allegion Canada Inc.

Atlantic Division
92 Chani Drive
Lower Sackville, NS
www.allegioncanada.ca

Allegion Canada Inc.

Quebec
9450 Henri-Bourassa ouest
Montreal, QC
www.allegioncanada.ca

Allegion Canada Inc.

Manitoba/Saskatchewan
50 Terracon Place
Winnipeg, MB
www.allegioncanada.ca

Allegion Canada Inc.

Alberta
3428 25th Street N.E.
Calgary, AB
www.allegioncanada.ca

Allegion Canada Inc.

British Columbia
3080 Beta Avenue
Burnaby, BC
www.allegioncanada.ca

ABUS Canada Inc.

1220 Dundas Street East
Toronto, ON
www.hardwareagencies.com

BG Distribution

Ottawa Branch
5370 Conotek Road
Orleans, ON
www.bgdistribution.ca

BG Distribution

Toronto Branch
115 Sharer Road Unit #2
Vaughan, ON
www.bgdistribution.ca

BG Distribution

Montreal Branch
4500 Rue Molson
Montreal, QC
bgdistribution.ca

BG Distribution

Quebec City Branch
125 Rue Fortin Unit#180
Quebec City, QC
www.bgdistribution.ca

Jason Belanger

CPS, CRL

Gamble Lock Door & Safe
3 - 1100A Davis Drive
Newmarket, ON
www.gamblelock.com

Joseph Camara

Edwards Builders Hardware
4988 Dundas Street West
Islington, ON
www.edwardsbuildershardware.com

CANAROPA

Quebec
1725 50th Avenue
Lachine, QC
www.canaropa.com

CANAROPA

Ontario
1866 Kipling Avenue
Rexdale, ON
416-241-4445
www.canaropa.com

CANAROPA

Alberta
3015 16th Street NE
Calgary, AB
403-250-9333
www.canaropa.com

CANAROPA

British Columbia
106 - 1350
Jacombs Road
Richmond, BC
604-279-2524
www.canaropa.com

Connection Network Agencies

2245 Royal Windsor Drive Unit #4
Mississauga, Ontario
www.connectionnetwork.ca

Edwards Builders Hardware

4988 Dundas Street West
Islington, ON
www.edwardsbuildershardware.com

Gamble Lock Door & Safe

3 - 1100A Davis Drive
Newmarket, ON
www.gamblelock.com

Hardware Agencies

Head Office - Toronto
6520 Northam Drive
Mississauga, ON
www.hardwareagencies.com

Hardware Agencies

Toronto Branch
349 Carlaw Ave. Suite 100
Toronto, ON
www.hardwareagencies.com

ILOC Corporate Members 2018

Please support our members who recognize the value and importance of ILOC and support us in creating a better Institutional and In-House Locksmith and Security Industry.

IDN Canada

Toronto Branch
70 Floral Parkway
Toronto, ON
www.idncanada.ca

IDN Canada

Burlington Branch
1800 Appleby Line Unit#5
Burlington, ON
www.idncanada.ca

IDN Canada

Calgary Branch
2010 30th Ave. N.E. Unit 15
Calgary, AB
www.idncanada.ca

IDN Canada

Edmonton Branch
9681 45th Avenue
Edmonton, AB
www.idncanada.ca

IDN Canada

Halifax Branch
37 Mosher Drive
Dartmouth, NS
www.idncanada.ca

IDN Canada

Montreal Branch
1600 Rue Beaulac
Ville St. Laurent, QC
www.idncanada.ca

IDN Canada

Ottawa Branch
1250 Old Innes Rd. Unit 508
Ottawa, ON
www.idncanada.ca

IDN Canada

Vancouver Branch
2172 Douglas Road
Burnaby, BC
www.idncanada.ca

Mark Johnston

IDN Canada
70 Floral Parkway
Toronto, ON
www.idncanada.ca

Doug King

Hardware Agencies Ltd.
1220 Dundas Street East
Toronto, ON
[www.hardwareagencies](http://www.hardwareagencies.com)

Gary Mayzel

Edwards Builders Hardware
4988 Dundas Street West
Islington, ON
www.edwardsbuildershardware.com

The Paisley-Manor Insurance Group

1446 Don Mills Road Suite 110
North York, ON
www.paisleymanor.com

***A big thank you
to ALL our
corporate
members.***

***To those that
have been with
us for the past
eleven years as***

***well as those
that have just
recently
appreciated the
benefits of a
membership in
ILOC.***

***You stand with
us and we are
happy to offer
our support to
you as well.***

***New corporate
members are
always
welcome and
accepted
throughout the
year!***

Strong enough to excel in harsh environments!



**Ideal for
both Safety
& Industrial
Applications!**

Laminated 41 Series

ABUS proudly offers its 41 Series Laminated Padlocks. These padlocks provide ideal solutions for securing job boxes and locking out machines, along with a variety of other industrial and safety applications.

Features & Benefits

- Hardened steel shackle and body plates are individually coated with ETERNA™ plating for rust protection
- High-precision 5-pin tumbler
- Coloured vinyl bumper for easy identification (8 colours)
- Made from high-quality recycled steel
- FDA-approved lubricant - ideal for the food industry
- Meets OSHA lockout/tagout guidelines
- Available keyed-different, keyed-alike or master-keyed



For more information on ABUS products, please contact your local distributor.